



# HANCOCK BIOLOGICAL STATION

**SUMMER 2015**

**May 26 – June 29**



Each summer Murray State University's Hancock Biological Station provides an outstanding offering of field oriented environmental and ecological courses. Courses meet all day, twice a week so that people can take 2 courses during this session. All courses carry 4 credit hours. Scholarships and housing are available. Contact the Station for additional details. Scholarship applications should be completed by May 1, 2015. Find out more by visiting the Station's web site ([www.murraystate.edu/hbs](http://www.murraystate.edu/hbs)) or calling 270-809-2272 (ask for Gerry Harris, or e-mail her at [gharris@murraystate.edu](mailto:gharris@murraystate.edu)).

## BIO 330 – PRINCIPLES OF ECOLOGY

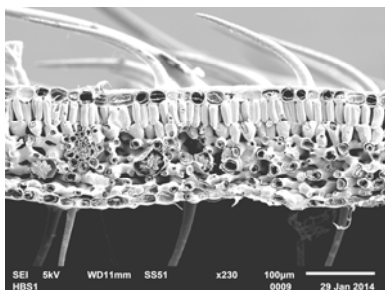
**Tim Spier**

An introduction to the basic principles and concepts relating to environmental systems. Emphasis is on community ecology. Much of the course is devoted to field observations and experimentation. The course is aimed primarily at undergraduate Biology majors but is open to others. Tuesday & Friday (First day of class is May 26, Last day of class is June 26)

## BIO 578/678 CONSERVATION FIELD BIOLOGY

**Heather Passmore**

The conservation of life and habitats. The course highlights modern empirical and theoretical studies of the maintenance, loss, and restoration of biological diversity, endangered species, and habitats. Monday & Thursday. (First day of class is May 28, Last day of class is June 29)



SEM cross section of a leaf

## BIO 514/614 SCANNING ELECTRON MICROSCOPY

**Karla Johnston & David White**

The theory, principles and applications of scanning electron microscopy (SEM). After a predetermined number of instructional hours, the participants are expected to successfully complete a test that measures competency in SEM operation, specimen preparation, and remote operations. The course includes remote operations where researchers and teachers have access to the microscope for use in their own labs or classrooms. The course is limited to a maximum of 5 students. Days and times arranged.

## BIO 553/663 – FIELD BOTANY

**Richard Abbott**

A survey of the plants of western Kentucky and surrounding states. Emphasis is on field identification of common species, use of keys, collection and preparation of specimens, and general plant ecology of the region. Wednesday & Saturday (Dr. Abbott is a visiting scholar from the Missouri Botanical Garden) (First day of class is May 27, Last day of class is June 27)

## BIO 586/686 LIMNOLOGY

**Michael Flinn**

The study of freshwater environments, including the interrelationships of the physical, chemical, and biological features of lakes and streams. Tuesday & Friday (First day of class is May 26, Last day of class is June 26)

