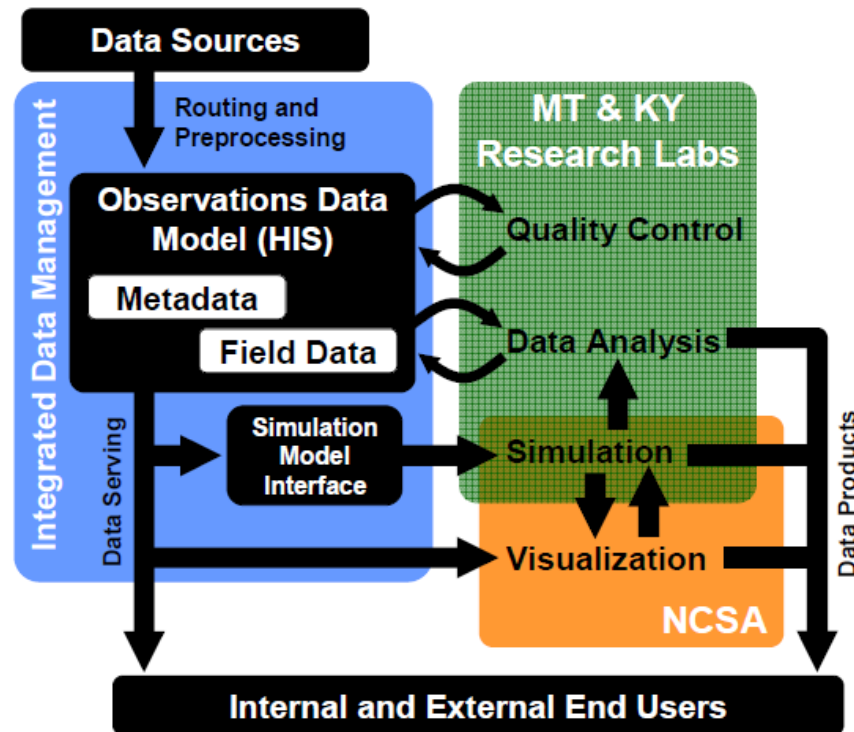


# Architecture

- The architectural view is comprised of many perspectives. As the product evolves we will strive to separate out the views. In particular, we would like to differentiate between:
  - The structural architecture
  - The technology infrastructure and data flow architecture
  - The data architecture

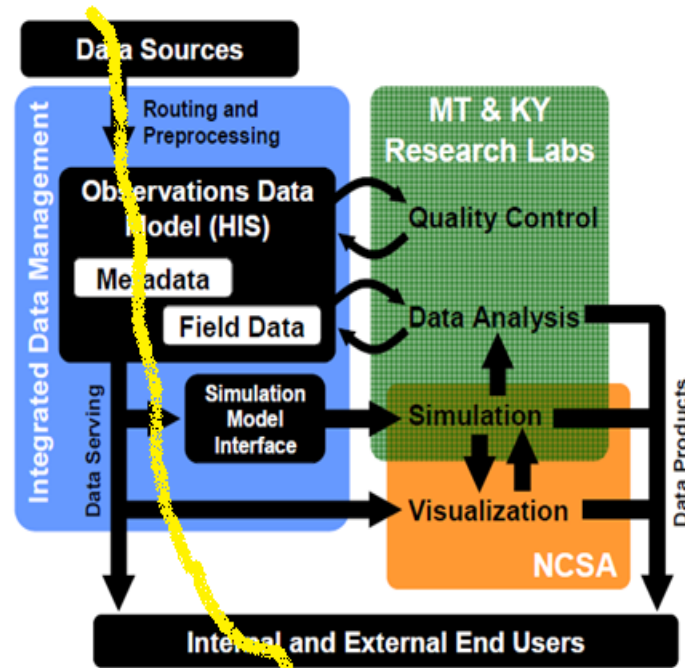
# VOEIS System Structure

Virtual Observatory and Ecological Informatics System



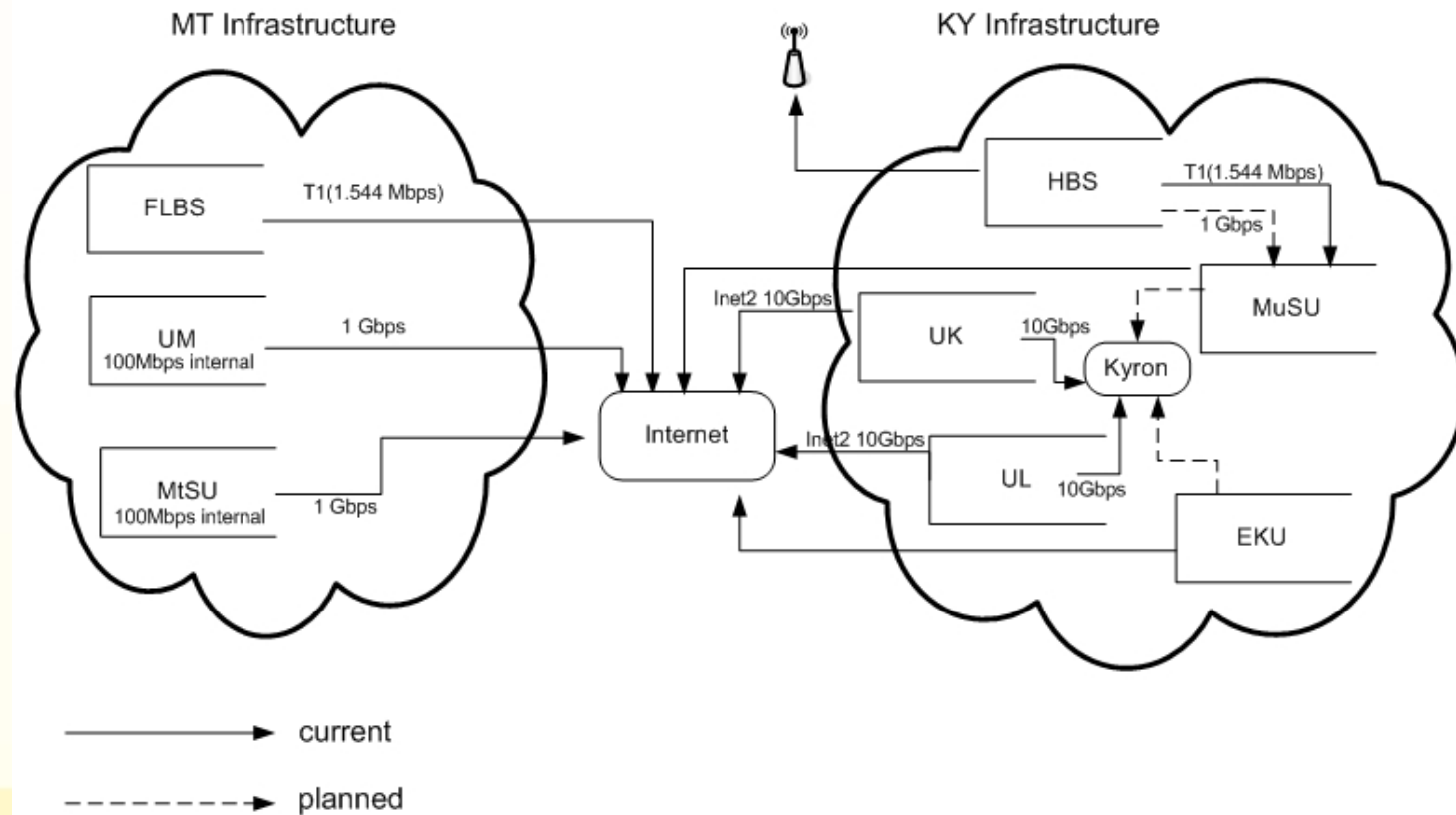
# VOEIS Prototype

Virtual Observatory and Ecological Informatics System



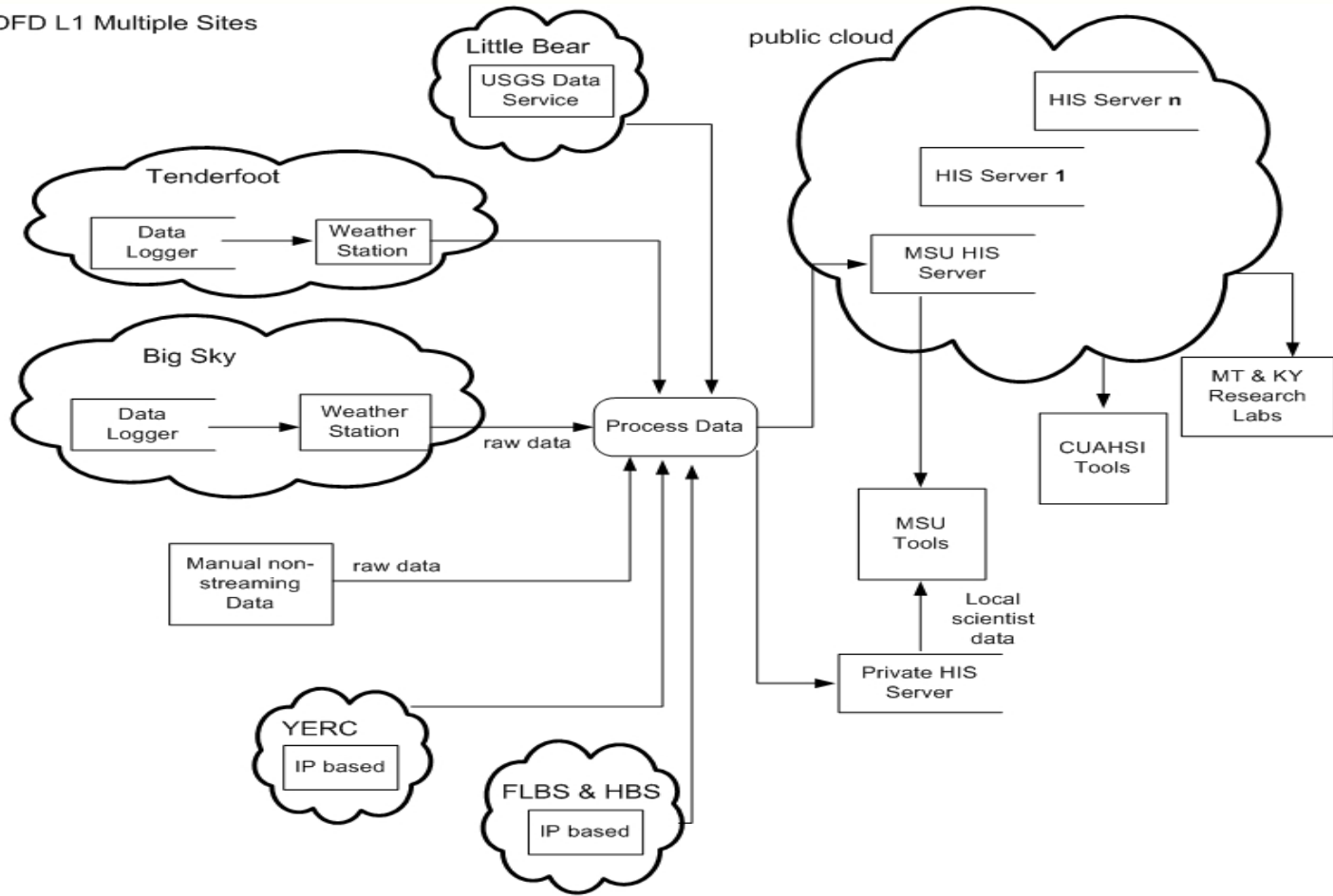
# Infrastructure

DFD L0



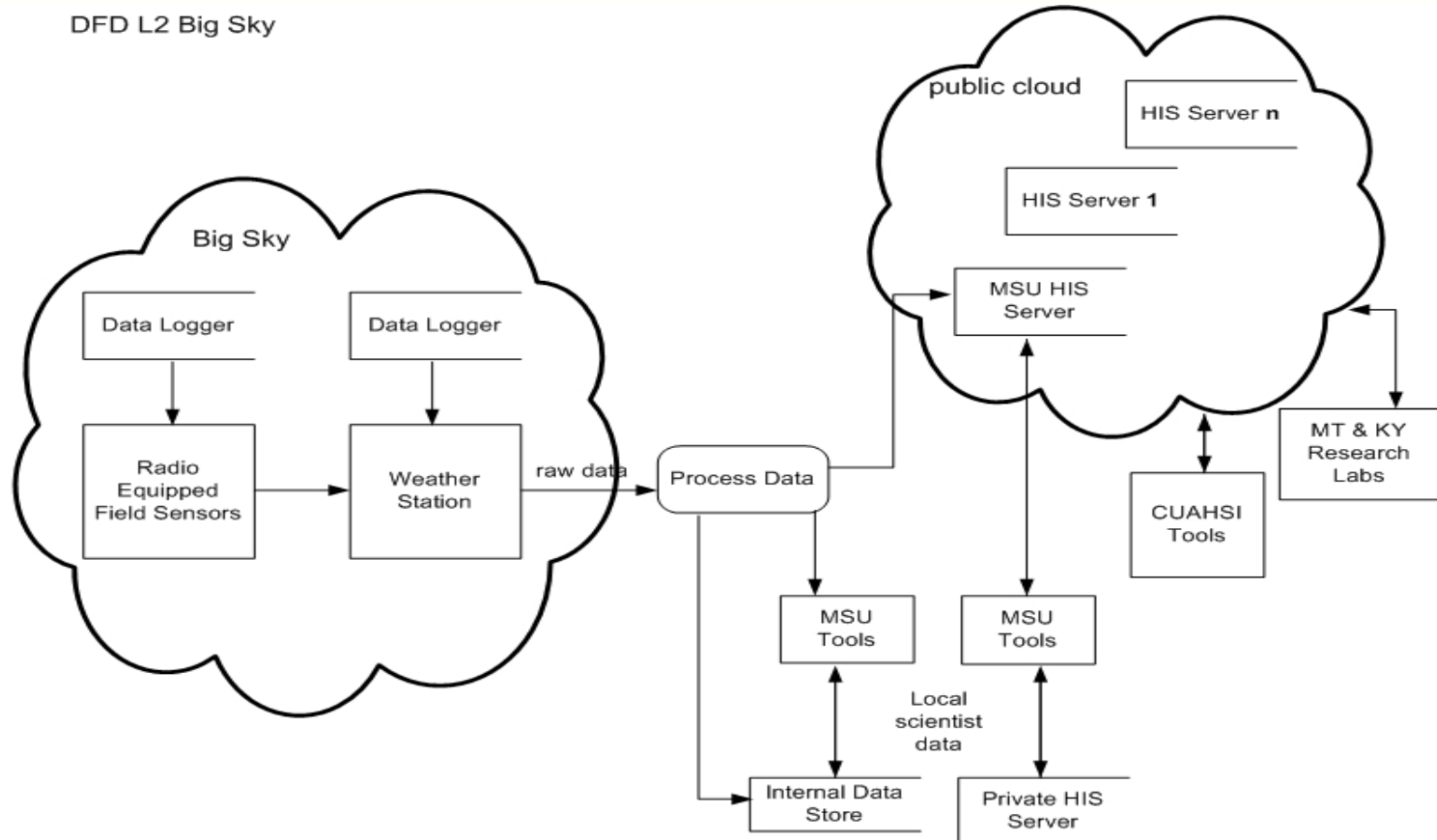
# Infrastructure

DFD L1 Multiple Sites



# Infrastructure

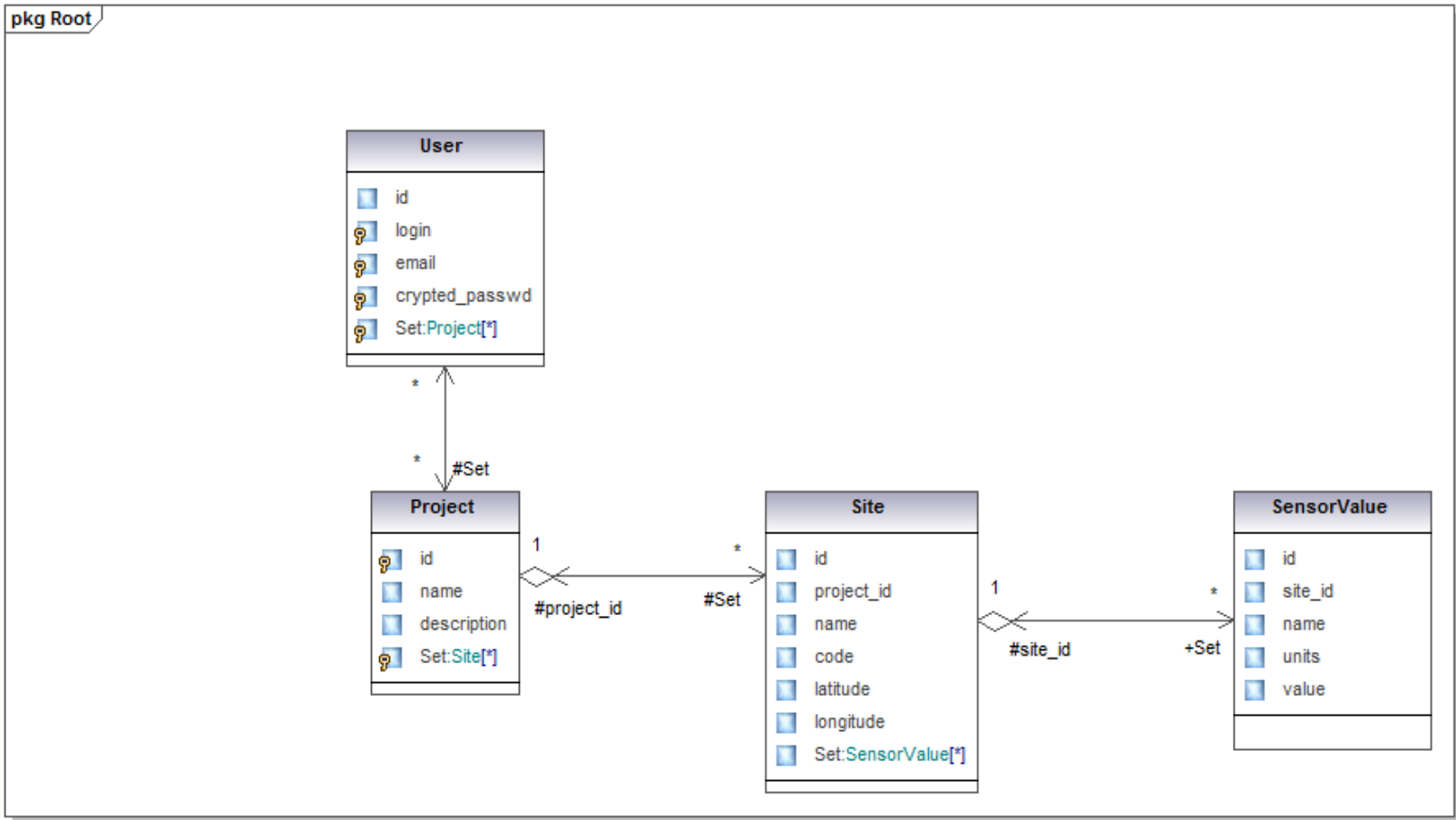
DFD L2 Big Sky



Internal data store. SQL-like for now, but non-relational planned. Superset of data stored on a HIS server

Data in HIS schema format. Loss of semantics is possible from raw data

# Data Architecture



Generated by UModel

[www.altova.com](http://www.altova.com)

# Collaboration

- Work with all partners to develop an extensible integrated data management architecture
  - Supports various data paths through a framework
  - Supports bi-directional flows between storage and analysis
  - Quality Control
  - Data Analysis
- Work with Kentucky, NCSA to develop the critical component interfaces
  - Simulation
  - Visualization