



ArcGIS® Pro

**Activating,
Downloading,
Installing, and
Licensing**

Esri's ArcGIS Pro

Student Edition

Mapping Applications and Resource Center

**Jesse D. Jones College of Science, Engineering and Technology
Murray State University**

Installing ArcGIS Pro 2.4 through 2.6

Before Installation

Before installing ArcGIS Pro (and any software, for that matter), check to make sure the target laptop or desktop actually meets the system requirements to run the software.

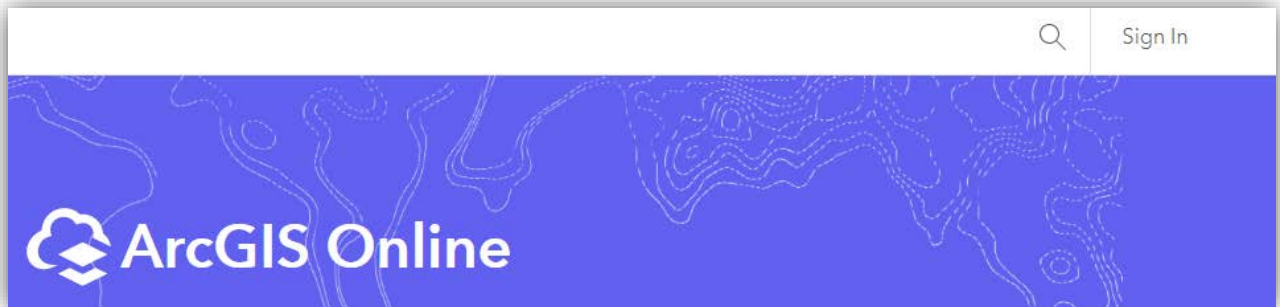
Minimum system requirements:

- Windows 10 or Windows 8.1
- 2 Core CPU
- 4GB RAM
- 32GB of free space available on the hard drive
- 24-bit graphics card with 4GB of dedicated RAM

ArcGIS Pro requires Windows 8.1 or 10. Native Apple computers are not supported. ArcGIS Pro can be installed on a Mac computer only after creating a virtual computer environment using Boot Camp or Parallels, or similar product.

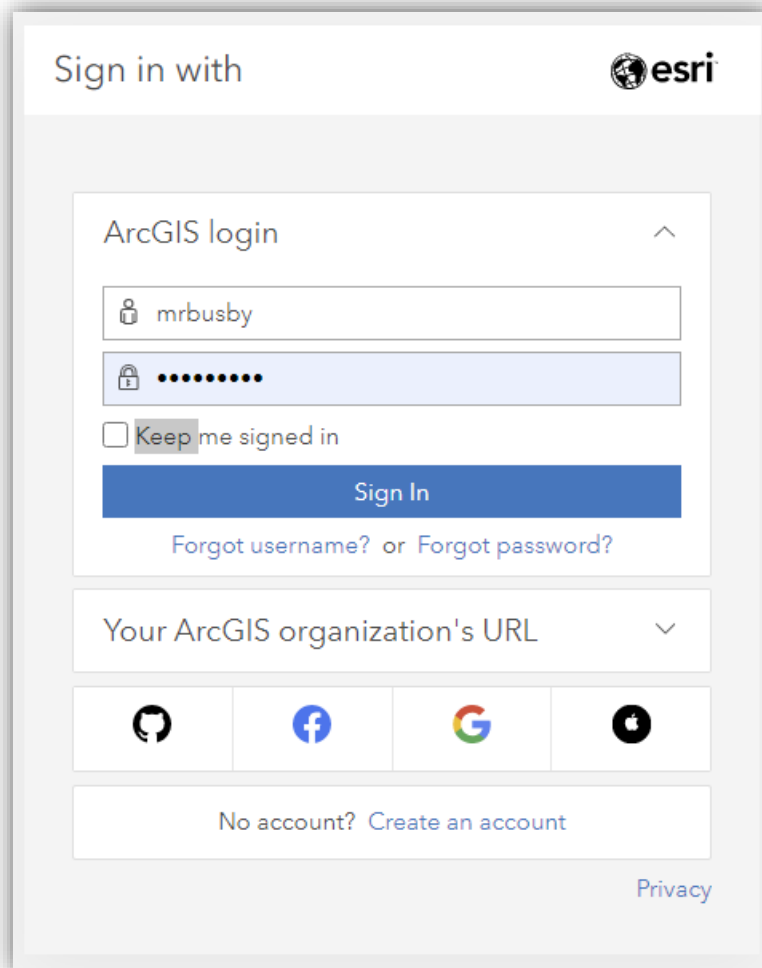
If you are not sure if your computer can run ArcGIS Pro, follow this link to install “[Can You Run It?](#)” and find out.

Downloading ArcGIS Pro



First, visit arcgis.com

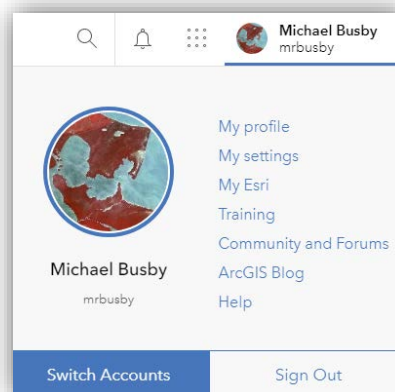
In the upper-right corner, “**Sign in**” with your Esri Global Account. If you don’t have an Esri Global Account, or have forgotten your username and password, email msu.mapping@murraystate.edu and request assistance.



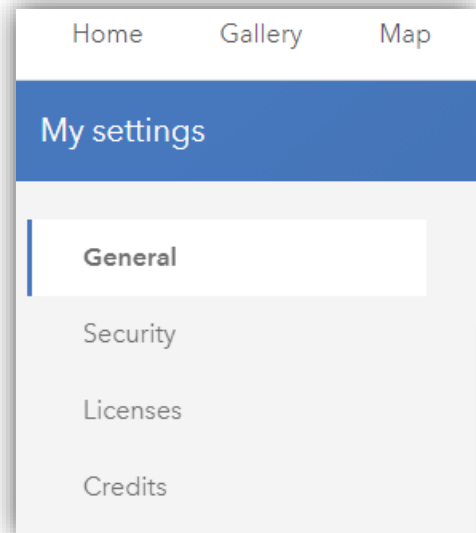
The image shows the ArcGIS login interface. At the top, it says "Sign in with" followed by the Esri logo. Below this is a section titled "ArcGIS login" with a dropdown arrow. It contains a username field with "mrbusby" entered, a password field with masked characters, and a checkbox labeled "Keep me signed in". A blue "Sign In" button is below the password field. Under the button are links for "Forgot username?" and "Forgot password?". Below the login section is a field for "Your ArcGIS organization's URL" with a dropdown arrow. Underneath are four social media icons: GitHub, Facebook, Google, and Apple. At the bottom of the login section is a link "No account? Create an account". A "Privacy" link is located at the bottom right of the entire form.

Enter your username and password for your Esri Global Account in the boxes provided.

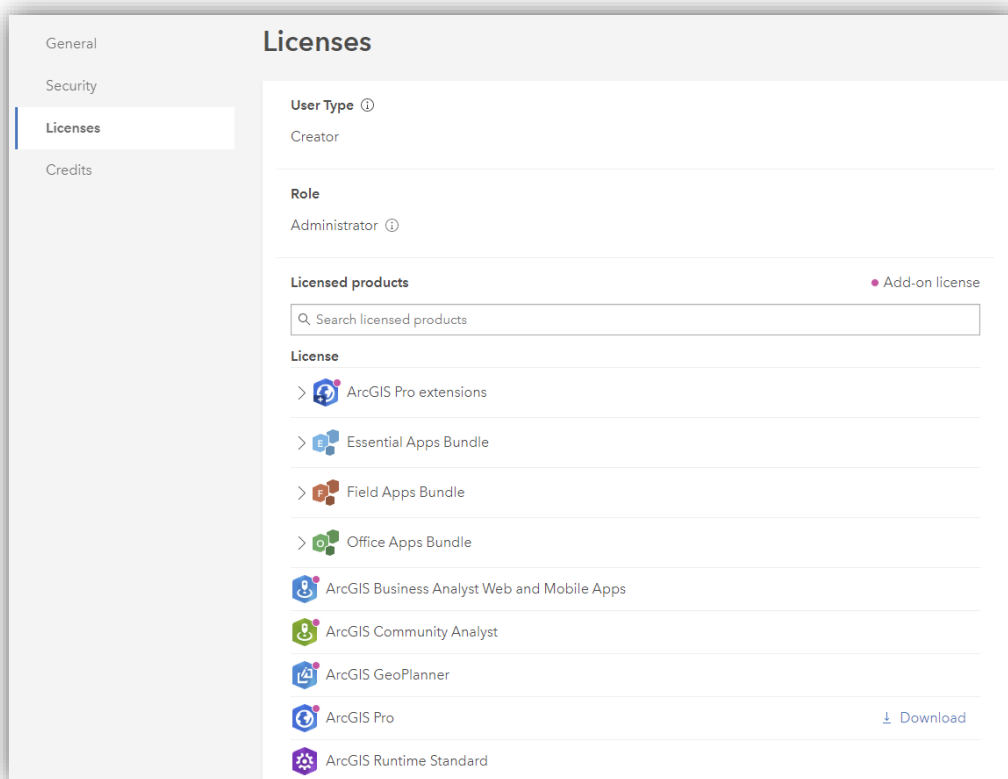
After sign in, click your account name in the top-right corner. A menu will appear. Click **My Settings**.

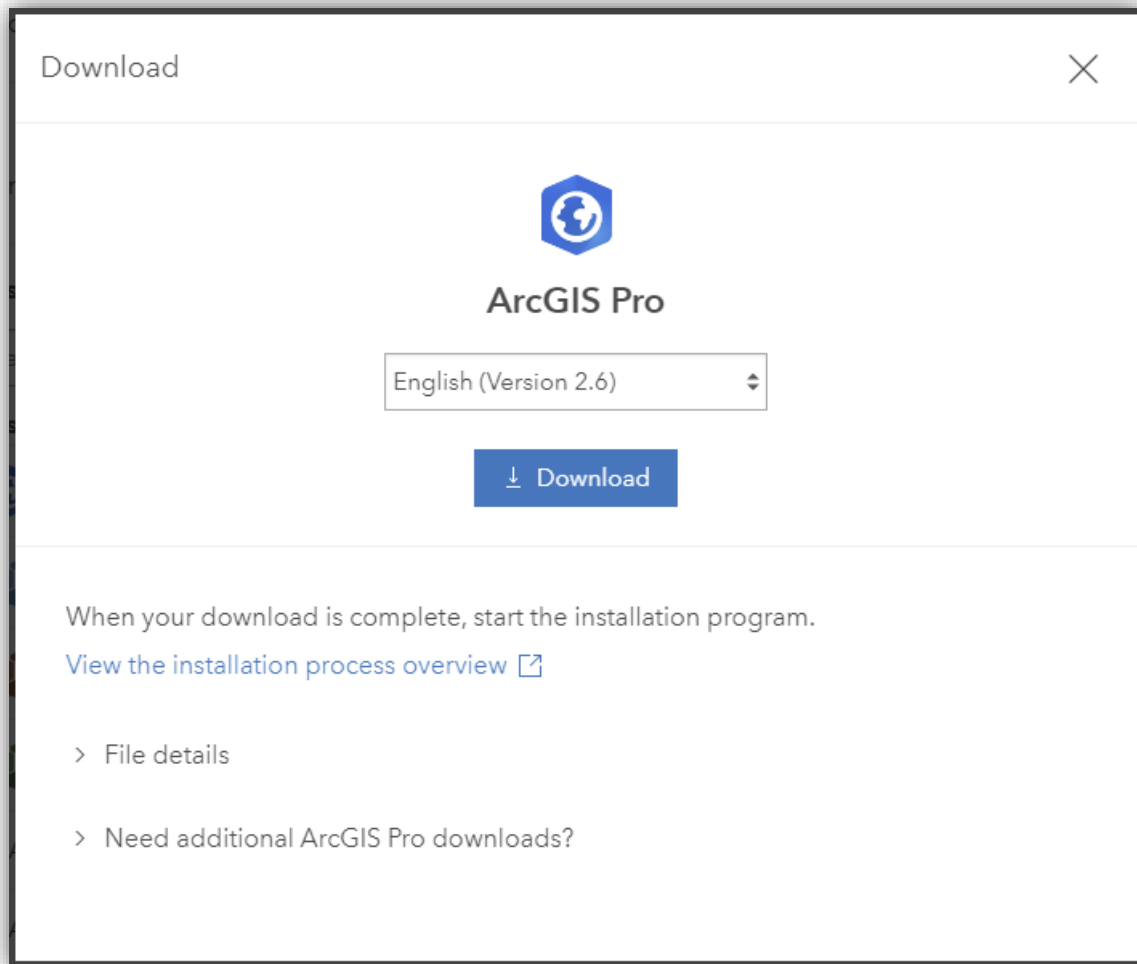


On the left of the page, find and click Licenses.

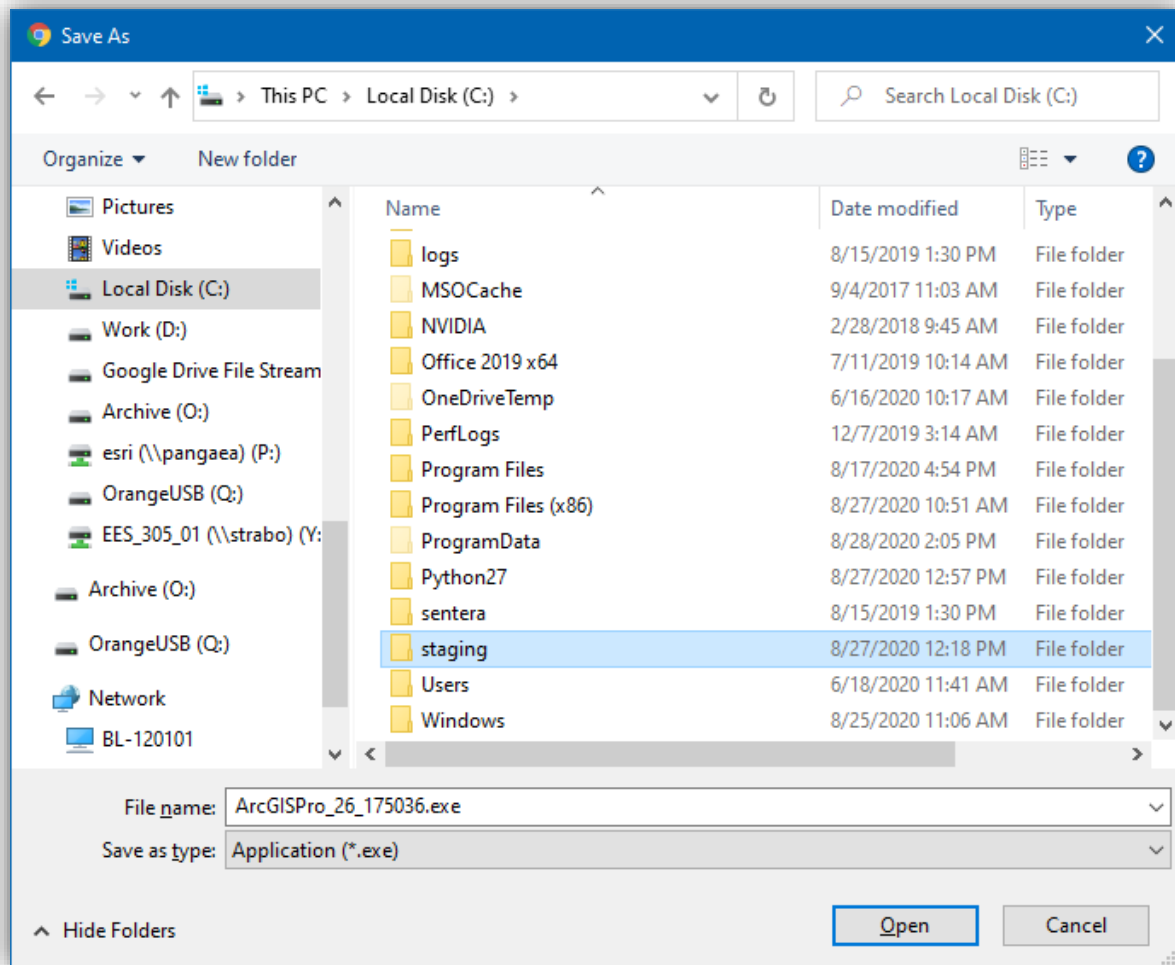


The page provides information about what User Type you have been assigned, your organization Role, and provides a list of Licensed Products. Scroll down to ArcGIS Pro. On the line with ArcGIS Pro, a “Download” button should be available. Click **Download**.



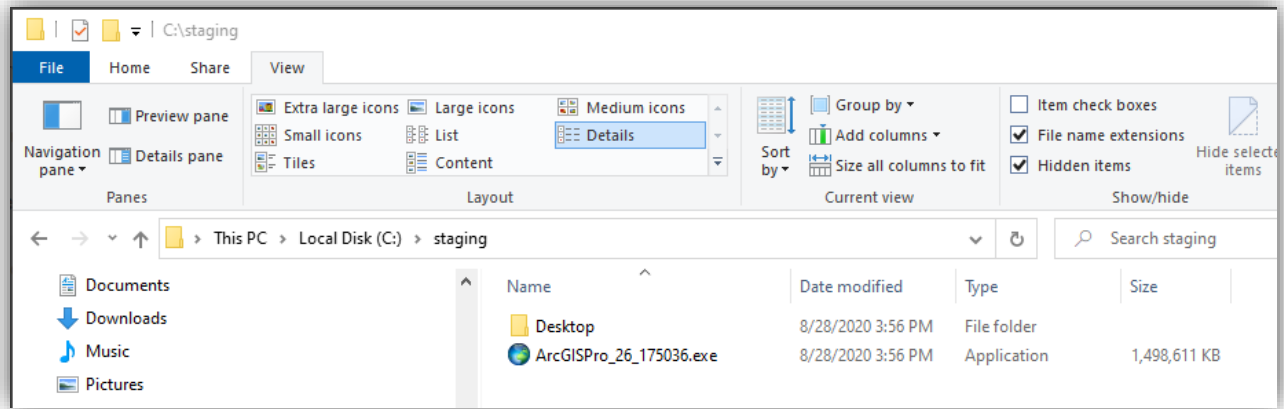


Select the language version most suitable for you from the drop-down menu, then click **Download**.



A Windows File Explorer window will open. Navigate to Local Disk C:\ and create a new folder, "C:\staging" on your local disk. **Save** the ArcGISPro EXE file into this staging folder.

Using the "staging" folder is good practice for downloading and installing Esri self-extracting executable files.



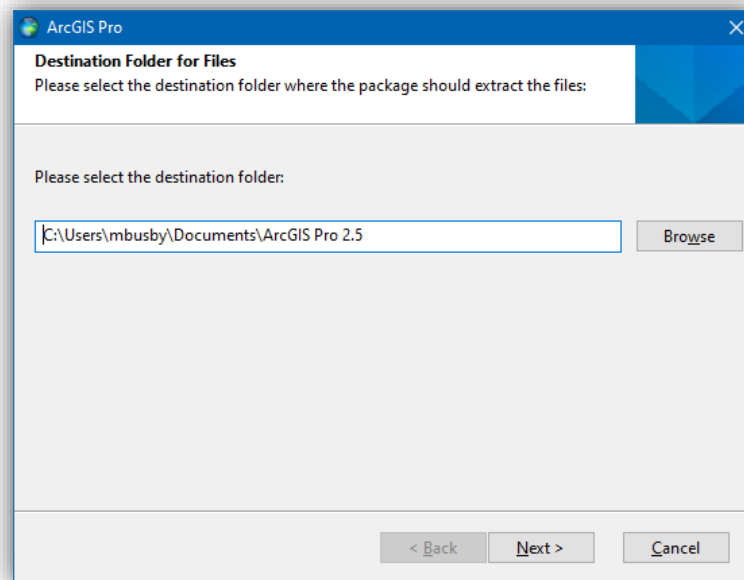
ArcGIS Pro is a 1.5GB download and the download may take a while depending on the speed of your connection.

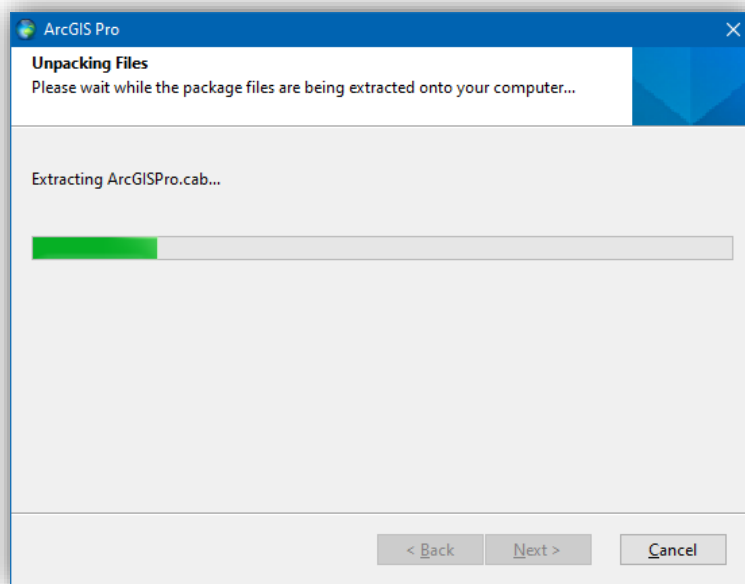
Another good practice is to ensure all file details are visible, the Date Modified, the file Type, and the file Size. Also, from the View tab, check the box to display File name extensions. Knowing a file extension can help determine the sort of file and what application might be best suited for using the file. Finally, displaying the full path in the top bar of the window is helpful for locating yourself within your folder structure.

When the file has successfully downloaded, double-click on the ArcGISPro EXE file to begin the installation.

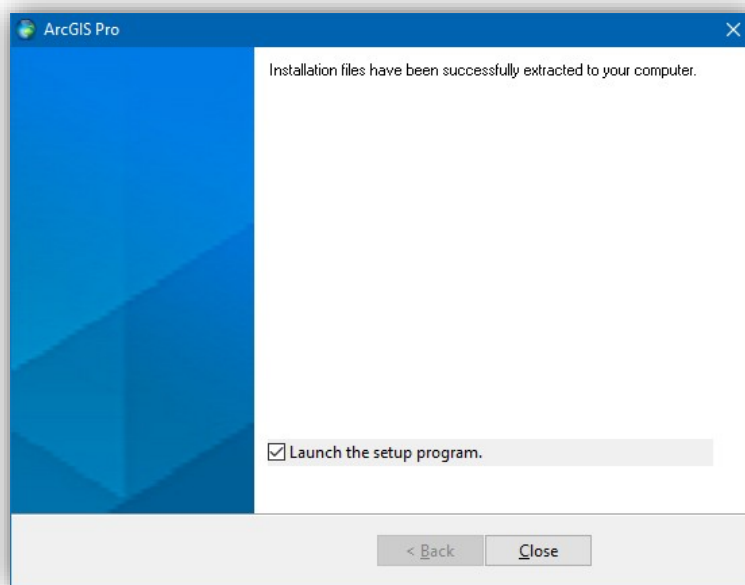
Destination Folder for Files

The setup for ArcGIS Pro requires a destination folder to unpack all of the necessary files for ArcGIS Pro. Use the **Browse** button and navigate to the c:\staging folder. Next>



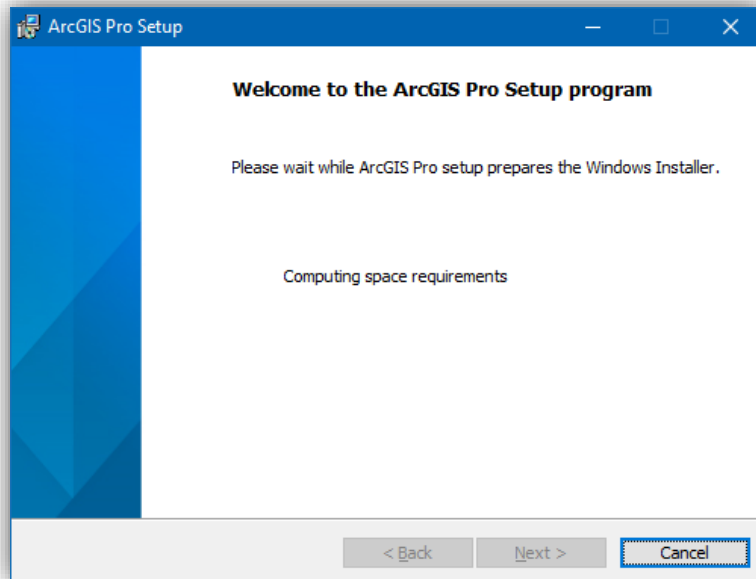


Extracting the necessary files requires a few moments; a progress indicator will appear and a list of files being unpacked will be displayed.

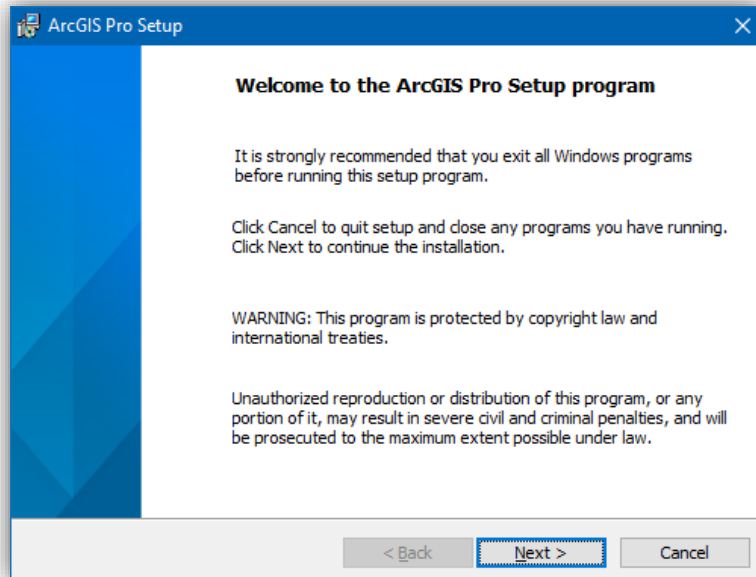


When the files have been successfully extracted, leave the “Launch the setup program” boxed checked and Close the window to begin installation.

Welcome to the ArcGIS Pro Setup program



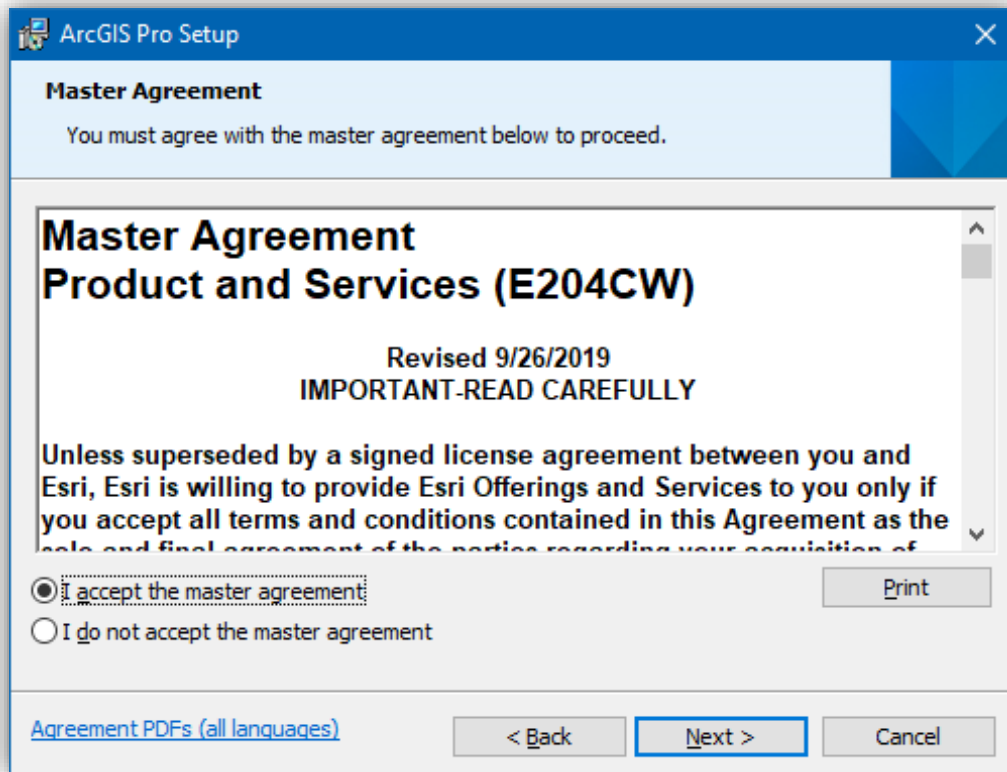
ArcGIS Pro will examine your computer, see if it meets the minimum system requirements, and check the hard drive for space. Next >



A screen displaying a few reminders and warnings will appear. Next >

Master Agreement

This is the typical End User License Agreement (EULA). The software is for educational use only, for use to complete homework, and to assist with faculty-directed/guided research. Any other use is restricted and expressly forbidden. Make sure you accept the agreement in order to install the software. Next>

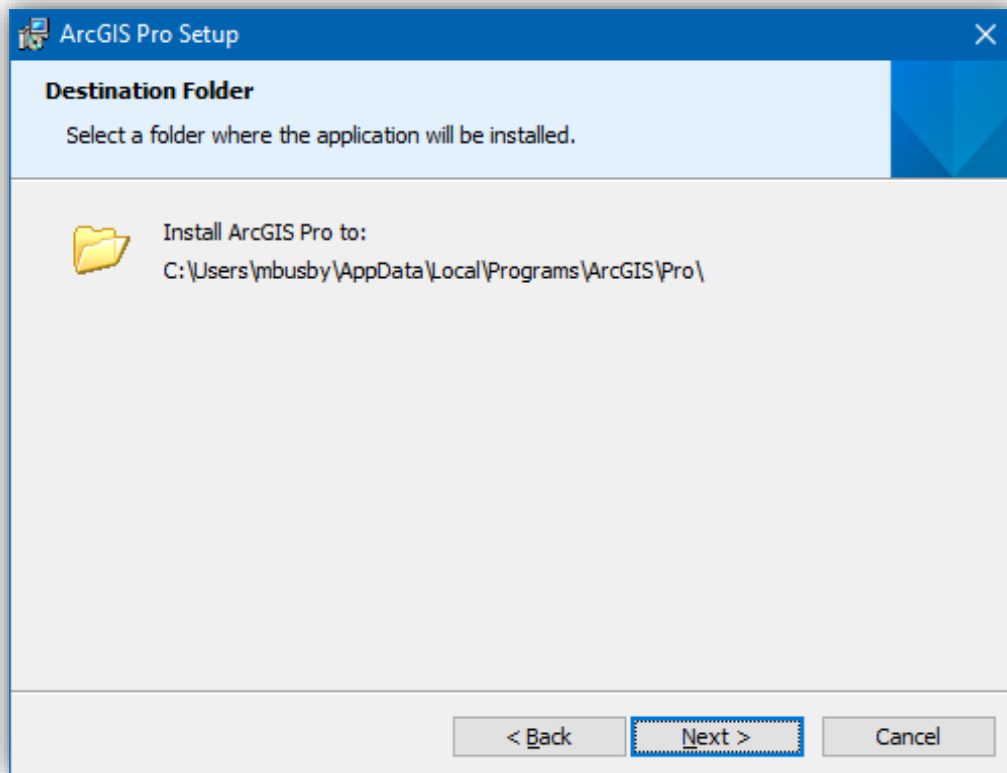


Esri Customer Experience Program (no screenshot)

Do not join the Esri Customer Experience Program. Next >

Destination Folder

Do not change the destination folder unless you really want to foul up your install. Next>

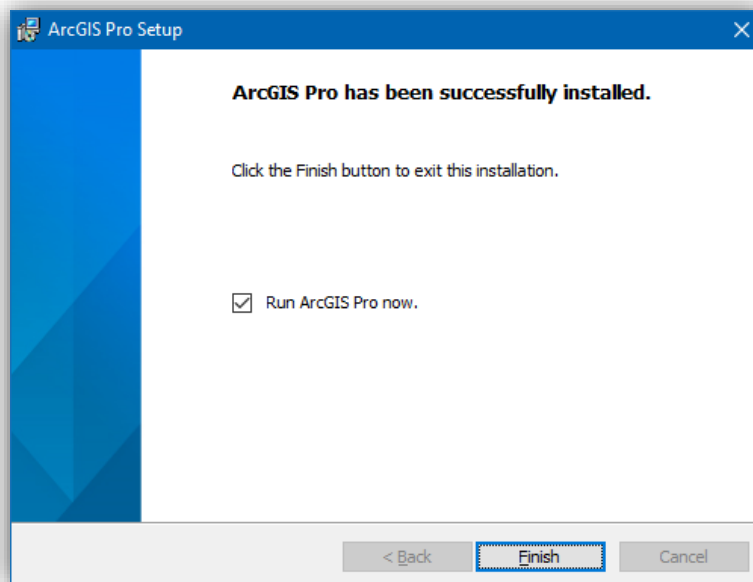


Take a Break While ArcGIS Pro Installs

Get coffee; the installation is going to take a while.

ArcGIS Successfully Installed

When the installation completes, leave the “Run ArcGIS Pro now” box checked. Finish

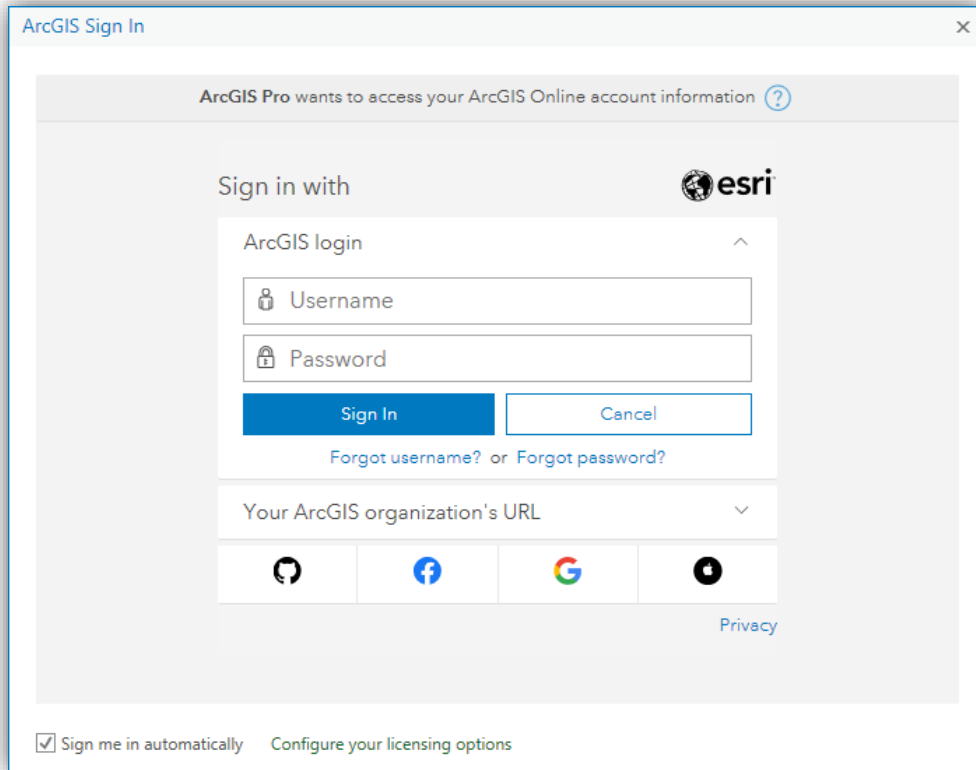


ArcGIS Pro Authorization

ArcGIS Pro takes a while to load. The splash screen will appear and below the logo messages will display indicating progress.



ArcGIS Pro Sign In



The image shows the ArcGIS Pro Sign In dialog box. At the top, it says "ArcGIS Pro wants to access your ArcGIS Online account information" with a help icon. Below this, it says "Sign in with" followed by the Esri logo. The main section is titled "ArcGIS login" and contains two input fields: "Username" and "Password". Below these fields are two buttons: "Sign In" (blue) and "Cancel" (white with blue border). Under the buttons, there are links for "Forgot username?" and "Forgot password?". Below the login section, there is a dropdown menu labeled "Your ArcGIS organization's URL". At the bottom of the dialog, there is a checkbox labeled "Sign me in automatically" which is checked, and a link labeled "Configure your licensing options". There are also social media icons for GitHub, Facebook, Google, and LinkedIn, and a "Privacy" link.

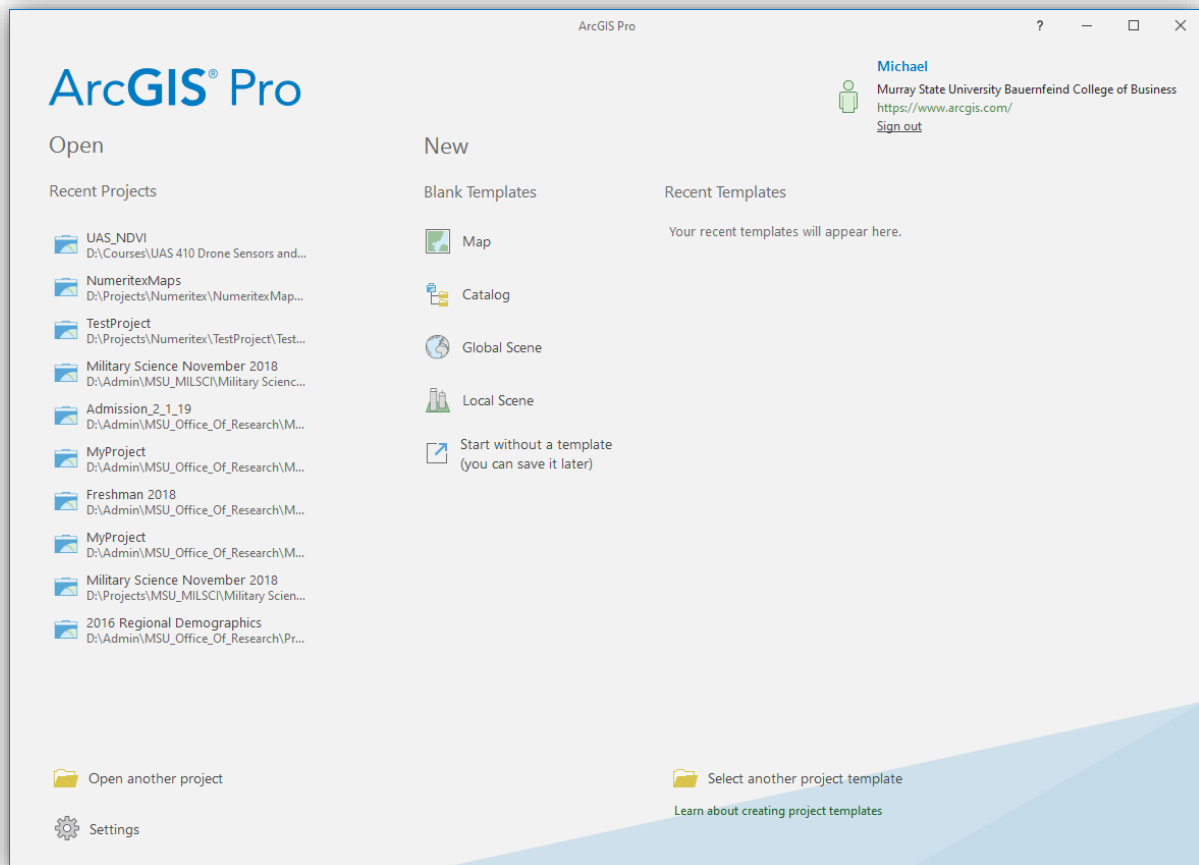
ArcGIS Pro requires users to sign-in to their Esri Global Account in order to use the software (at least the first time).

Enter your Esri Global Account username and password to get started mapping.

ArcGIS Pro is Ready-To-Go

If all has gone according to plan, a window similar to the one below should appear, minus the list of recent projects.

You are ready to begin your GIS experience!



Getting Help

Esri Global Account

If you forget your Esri Global Account login or password, email msu.mapping@murraystate.edu or mbusby@murraystate.edu to have your credentials reset.

Esri Service Packs

As the Student Edition is a fully-functional software package, downloading Service Packs is routinely necessary to fix or enhance software functions. Make sure to visit www.Esri.com Support pages occasionally for downloads.

Troubleshooting & Help

The ArcGIS for Desktop Student Edition does not come with technical support. However, Esri has an abundant amount of free help available to address a wide array of issues and concerns.

Esri User Forums

User forums are a good way to discover information of technical issues, or to figure out ways to use the software in addressing a particular research problem.

Google

Chances are, someone has already experienced a dilemma and has documented a solution. Perform a google search, either formed as a specific question, e.g. "how do I create a buffer in ArcGIS 10.1" or simply by using search terms, like "watershed delineation ArcGIS 10.2".

YouTube

Esri has a YouTube channel, EsriTV. EsriTV has hundreds of videos demonstrating technology, from fundamental "how-to" tasks, to more sophisticated analysis, and topical videos on geospatial technology.