

HANCOCK BIOLOGICAL STATION

SUMMER 2022



Each summer Murray State University's Hancock Biological Station provides an outstanding offering of field oriented environmental and ecological courses. All courses carry 4 credit hours. Scholarships and housing are available. Contact the Station for additional details. Scholarship applications should be completed by May 1, 2022. Find out more by visiting the Station's web site (www.murraystate.edu/hbs) or calling 270-809-2272 (ask for Barbara Like, or e-mail her at blike@murraystate.edu).

BIO 380 – WILDLIFE TECHNIQUES

Dr. Andrea Darracq

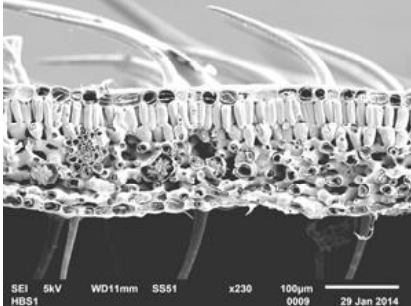
A survey and application of methods and techniques used in wildlife management and research including research design and analysis, passive sampling techniques, capture techniques, animal handling and marking, population estimation, telemetry, measuring habitat use and selection, and chemical immobilization. (May 16 – May 27)



BIO 588/688 RESERVOIR ECOLOGY

Dr. Michael Flinn

An examination of the variation in chemical and biological phenomena that characterize river impoundments. Literature reading and discussion is followed by 1) learning techniques of observation to identify pattern and process in nature, and 2) designing and conducting field experiments to assess cause and effect relationships. (May 16 – May 27)



SEM cross section of a leaf

BIO 514/614 SCANNING ELECTRON MICROSCOPY

Angela Hayden/Dr. Michael Flinn

The theory, principles and applications of scanning electron microscopy (SEM). After a predetermined number of instructional hours, the participants are expected to successfully complete a test that measures competency in SEM operation, specimen preparation, and remote operations. The course includes remote operations where researchers and teachers have access to the microscope for use in their own labs or classrooms. The course is limited to a maximum of 5 students. Days and times arranged. (May 31 – June 30)

BIO 572/672 – HERPETOLOGY

John Hewlett

A study of the taxonomy, morphology and natural history of reptiles and amphibians. Emphasis is placed on those species occurring in the central United States. (May 31 – June 30)



BIO 553/653 – FIELD BOTANY

Dr. Richard Abbott

A survey of the plants of western Kentucky and surrounding states. Emphasis is on field identification of common species, use of keys, collection and preparation of specimens, and general plant ecology of the region. Wednesday & Saturday (Dr. Abbott is a visiting scholar from the Missouri Botanical Garden) (July 5 – August 5)